

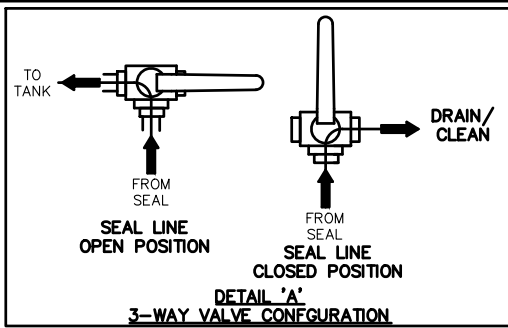
NOTES:

- 1.) ALL DIMENSION ARE ±1/4", UNLESS OTHERWISE SPECIFIED.
- 2.) MAWP 145 PSI @ -20 TO 175° F. (BASED ON ITEM #6)
- 3.) VESSEL HYDRO @ 1.3 x MAWP (219 PSI) = 285 PSI. (BASED ON TANK)
- 4.) DESIGNED PER ASME SECTION VIII DIV 1, 2017 ED.
- 5.) PIPE/FITTING ATTACHMENTS TO BE SCHEDULE 40, CLASS 150#, 304 S.S./316 S.S.
- 6.) LOCTITE 577 TO BE USED TO SEAL ALL CONNECTIONS, USE OF TEFLON TAPE NOT PERMITTED.

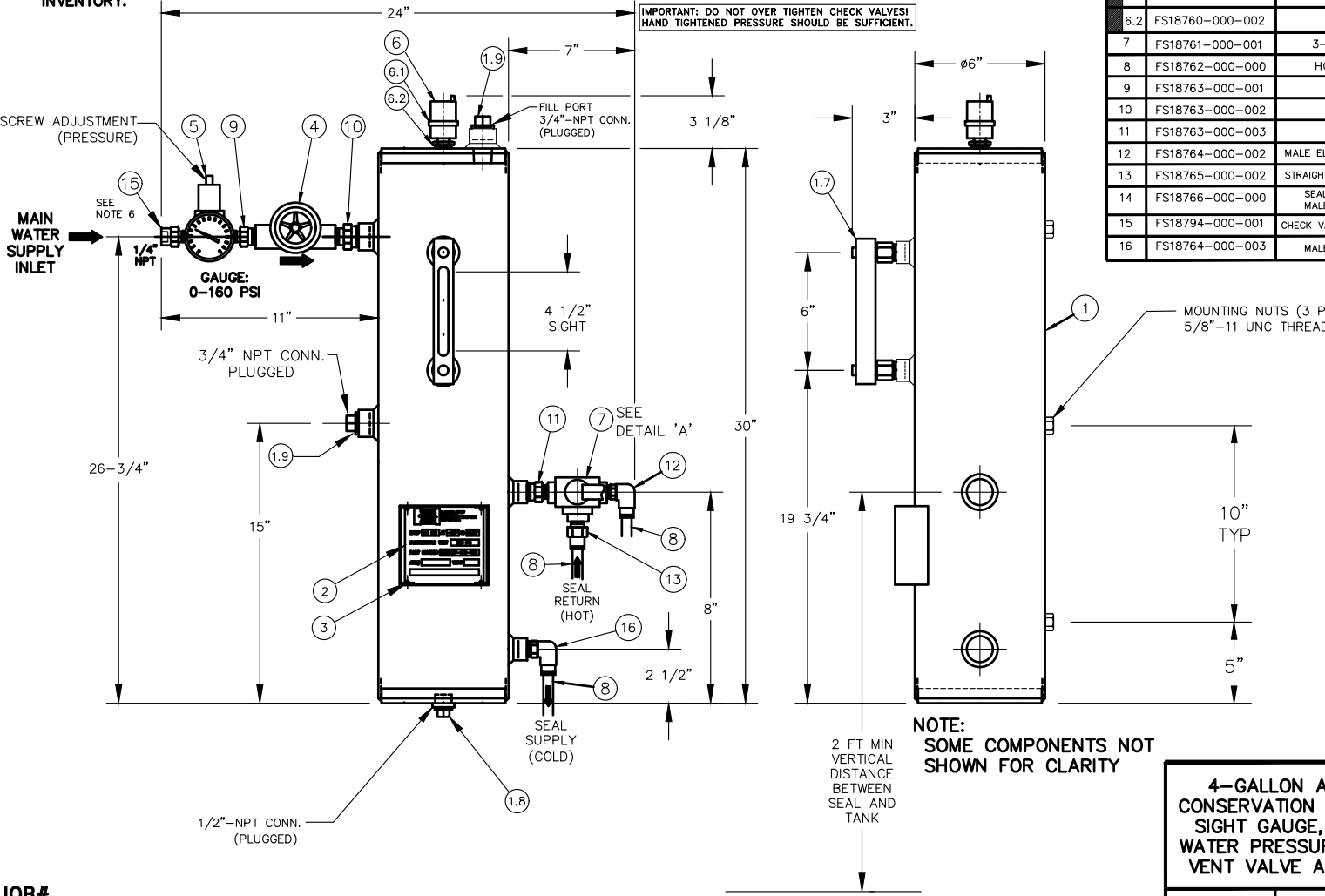
ITEM #1.8, *1 QTY. WAS (2), REMOVED (1) AND PUT BACK INTO INVENTORY.

ITEM #1.9, *2 QTY. WAS (3), REMOVED (1) AND PUT BACK INTO INVENTORY.

ITEM #1.10, *0 QTY. WAS (2), REMOVED AND PUT BACK INTO INVENTORY.



ITEM	PART NUMBER	DESCRIPTION	MATERIAL	QTY
1	FS25404-000-001	ANSI-LITE BF TANK, PLAIN NO CC	304L S.S.	1
1.7	FS22807-001	LEVEL GAUGE TUBULAR (6" C-C)	BORO GLASS/ALUM./BRASS/BUNA	1
1.8	FS25054-R14-008	1/2" NPT HEX HEAD PLUG	SA182-304L S.S.	*1
1.9	FS25054-R14-012	3/4" NPT HEX HEAD PLUG	SA182-304L S.S.	*2
1.10	FS25388-000-008	1/2" HOLLOW TAPERED ROUND PLUG	POLYETHYLENE	*0
2	FS22086-R14-002	NAMEPLATE FOR BARRIER FLUID TANKS	304 S.S. WITH CHEMICAL ETCHING	1
3	FS25421-000-001	BLIND RIVET, 1/8" DIA X .275"LG	ALUMINUM	4
4	FS18758-000-001	SIGHT FLOW INDICATOR	BRONZE / TEMPERED GLASS / BUNA / ABS	1
5	FS18759-000-001	WATER SUPPLY REGULATOR W/ PRESSURE GAUGE	BRASS / BUNA	1
6	FS18760-000-000	AIR VENT W/FLOAT AND CHECK VALVE	HOUSING: BRASS BODY INTERNAL: S.S./PLASTIC/ NITRILE	1
6.1	FS18760-000-001	AIR VENT W/FLOAT	BRASS / SS/ PLASTIC	1
6.2	FS18760-000-002	CHECK VALVE	BRASS / SS/ NITRILE	1
7	FS18761-000-001	3-WAY BALL VALVE, L-FLOW PATTERN	BRASS BODY/CHROME PLATED BRASS BALL/PTEE/VITON	1
8	FS18762-000-000	HOSE, 5FT SECTION OPAGUE BLUE	NYLON	3
9	FS18763-000-001	HEX NIPPLE, 1/4" TO 1/2"	316 ST.ST	1
10	FS18763-000-002	HEX NIPPLE, 1/2" TO 3/4"	316 ST.ST	1
11	FS18763-000-003	HEX NIPPLE, 1/2" TO 3/8"	316 ST.ST	1
12	FS18764-000-002	MALE ELBOW CONNECTOR, 3/8" NPT TO 1/2" OD TUBE	SS / BUNA	1
13	FS18765-000-002	STRAIGHT MALE CONNECTOR, 3/8" NPT TO 1/2" OD TUBE	SS / BUNA	1
14	FS18766-000-000	SEAL GLAND FITTINGS KIT, 1/4", 3/8", 1/2" STRAIGHT MALE, CONNECTORS (2 ea.) NOT SHOWN	SS / BUNA	1 KIT
15	FS18794-000-001	CHECK VALVE, 1/4" NPT, FEMALE (INLET) x MALE (OUTLET)	BRASS / SS / BUNA	1
16	FS18764-000-003	MALE ELBOW CONNECTOR, 1/2" NPT TO 1/2" OD TUBE	SS / BUNA	1



FLEX-A-SEAL

1 JACKSON STREET
P.O. BOX 184
ESSEX JCT., VT 05453-0184
800-428-3594

MAWP **145 PSI** AT **-20°F** TO **200°F**

HYDROSTATIC TEST **285 PSI**

PART NUMBER **FS25417-000-099**

JOB# YEAR

4-GALLON ANSI-LITE WATER CONSERVATION WCS2 SYSTEM WITH SIGHT GAUGE, FLOW INDICATOR, WATER PRESSURE REGULATOR, AIR VENT VALVE AND 3-WAY VALVE.

FLEX-A-SEAL, INC.
P.O. BOX 184 / 1 JACKSON ST.
ESSEX JUNCTION, VT 05453
(802) 878-8307

DRAWING NO.: **FS25417-000-099**

SCALE: NONE DRAWN BY: DW DATE: 6/22/18

REV

JOB#