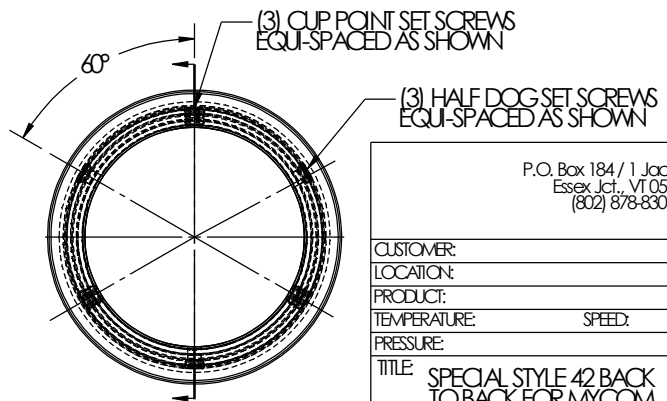


ITEM NO.	PART NUMBER	DESCRIPTION	Material	QTY.
* 1	FS19647	ROTATING SEAL ASSEMBLY	CARBON / HAST C / 316 S.S. / ALLOY 255	1
* 1.3	CPSS M8 X 8mm LG	CUP POINT SET SCREW	316 S.S.	3
* 1.4	HDSS M8 X 6mm LG	HALF DOG SET SCREW	316 S.S.	3
* 2	FS568-CR-348	ORING	NEOPRENE	2
* 3	FS568-CR-239	ORING	NEOPRENE	2
* 4	FST1614-106	MATING RING	17-4	2

* RECOMMENDED SPARE PARTS
NOTE (READ COMPLETELY BEFORE INSTALLATION):

- INSTALL (1) ITEM #4, MATING RING, WITH (1) ITEM #2, O-RING
- CHECK THAT ITEM #1.3, CUP POINT SET SCREWS, ARE NOT PROTRUDING BELOW HUB I.D. BEFORE INSTALLING ON SHAFT
 CHECK THAT ALL ITEM #1.4, HALF DOG SET SCREWS, ARE TIGHT BEFORE INSTALLING ON SHAFT
- IF SHAFT DOES NOT CONTAIN COUNTERBORE FOR SET SCREWS:
 • SCRIBE A LINE AT 1.500 [38.10] FROM MATING RING FACE AS SHOWN ON DRAWING
- REMOVE (1) ITEM #1.3, CUP POINT SET SCREW, FROM ITEM #1, ROTATING SEAL ASSEMBLY
- INSTALL ITEM #1, SEAL ASSEMBLY, ON SHAFT BY LOCATING COUNTERBORE OR SCRIBE LINE THROUGH OPEN SET SCREW HOLE
- WITH SEAL ASSEMBLY IN PROPER POSITION, TIGHTEN ALL (3) ITEM #1.3, CUP POINT SET SCREWS, ALTERNATELY UNTIL SECURE.
- INSTALL OTHER ITEM #4, MATING RING, WITH ITEM #2, O-RING



P.O. Box 184 / 1 Jackson St.
 Essex Jct., VT 05453
 (802) 878-8307

CUSTOMER:	
LOCATION:	
PRODUCT:	
TEMPERATURE:	SPEED:
PRESSURE:	
TITLE:	SIZE:
SPECIAL STYLE 42 BACK TO BACK FOR MYCOM 320 COMPRESSOR	90MM
DWG. NO. FS55580	REV.:
SHEET 1 OF 1	

SEAL CODE:	90MM42X01CX1QX
JOB#:	S126301
DRAWN BY:	AK
DATE:	5/25/10

DIMENSIONS IN [] ARE METRIC